

<b>Product :</b> :LCD monitor	<b>Bulletin No. :</b> 02-C/M-E0069
<b>Model :</b> GH17L,GH17E,GH17V~ (exclude GH17P)	<b>Bulletin Date :</b> 06-May-02
	<b>ECN Date :</b> 06-May-02

**SUBJECT :** Before service to prevent Inverter failure problem.

**Background :** GH17 LCD monitor used BN44-00064A inverter from Mar.2002 to April.2002.  
 But BN44-00064A inverter can be fail because of high voltage discharge to trans coil.  
 Symptom of failure : Trans coil burnt, smoke => dim display or No video.  
 So, Samsung stop using 64A inverter from May.2002.  
 Other inverters used at GH17 model such as BN44-00041A,BN44-00060A,BN44-00029A have no problem.

**Model name :** S/M171S,171B,170S,760TFT,S/T71S

**Solution** **Do Automatic upgrade service for all returned GH17 monitor to service center.**  
 At first, check serial number and check inverter part number after opening back cover .  
 If inverter number is BN44-00064A(blue color), replace with BN44-00041A inverter.  
 \* 64A inverter have 3 version (Blue, Yellow, Green tape around trans mounted on inverter board)  
 - Blue tape : Replace.  
 - Yellow or Green tape : No need to replace (improved version)

**Defective Range for each production factory**

Factory	64A inverter Range	Serial number	Remark(Serial number)
Korea	Mar.01~April.26,2002	GH17H4LT300001~GH17H4NT414953	<b>GH17H4LT300001</b> ↓ Factory ↘ Production Month
Mexico	Mar.25~April.26,2002	GH17HCFT309484 ~ Apr.30,2002	
Malaysia	April.03~April.26,2002	GH17HMFT400001~GH17HMFT400629	4 : Korea J : UK V: China C : Maxicc M :Malaysia
UK	Mar.20~April.26,2002	GH17HJAT305369~GH17HJAT500001	
CHINA	Did not use 64A inverter		

Samsung HQ will provide service inverters to all subsidiary.  
 If need more inverters, please contact to below person in HQ CS team.  
 - CJ Oh (Changejin Oh) : cjo2000@samsung.co.kr  
 - MH Lim (Minho Lim) : toonight@samsung.co.kr

**Application Date :** May.01,2002

( Interchangeability Code : \* I.C )

Location No.	OLD (before) Parts		NEW (changed) Parts		* I.C	
	SEC Code	Description	SEC Code	Description		
inverter board	BN44-00064A	Blue tape around Trans which mounted on inverter board	BN44-00041A	4 Trans type		
<b>Type</b>	<b>A type</b>	<b>B type</b>	<b>C type</b>	<b>D type</b>	<b>E type</b>	<b>F type</b>
Interchange Type Code (* I.C)	OLD → Early (Parts) / NEW → Late (Prod.) OLD → Late (Parts) / NEW → Early (Prod.)	OLD → Early (Parts) / NEW → Late (Prod.) OLD → Late (Parts) / NEW → Early (Prod.)	OLD → Early (Parts) / NEW → Late (Prod.) OLD → Late (Parts) / NEW → Early (Prod.)	OLD → Early (Parts) / NEW → Late (Prod.) OLD → Late (Parts) / NEW → Early (Prod.)	Parts Addition (None New)	Parts deletion (Old Del.)

**Application** Reference ( ) Only Defected sets ( ) Whole sets ( O )

**Attachment** Schematic Diagram ( ) Component Lay-out ( ) Exploded View ( )  
 Mechanical Diagram ( ) None ( ) Others ( )

**Product Month :** Mar~April.2002 **Serial No. (~ from)**

**Published by :** CJ Oh **Checked by :** KK Kim **Approved by :** KS Yeo

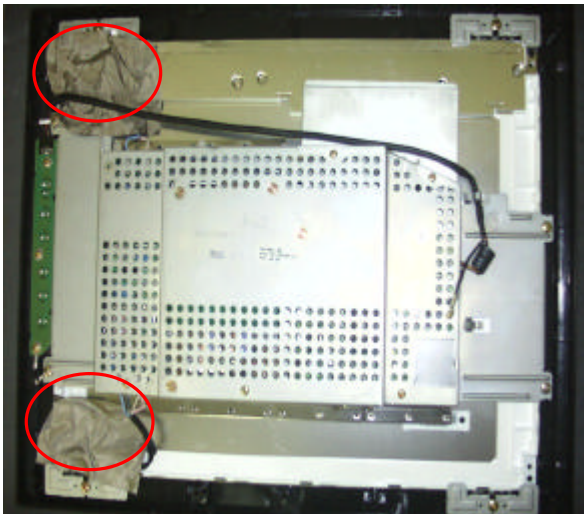
# Inverter replacing process.



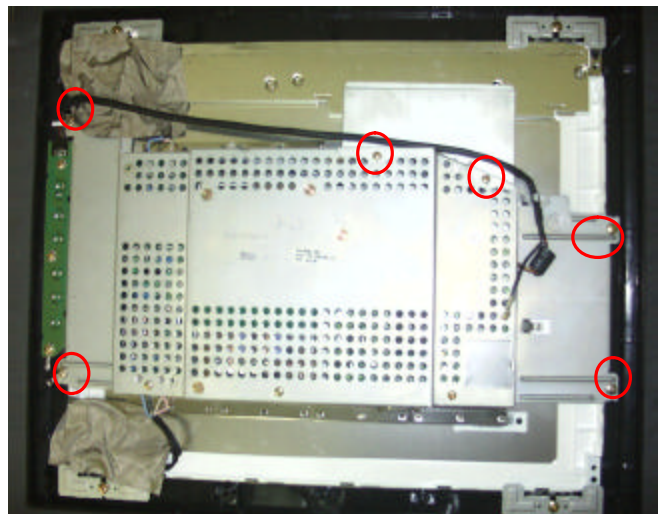
1. At first, remove signal cable with manual driver.  
**(Auto driver can damage plastic screw hole)**



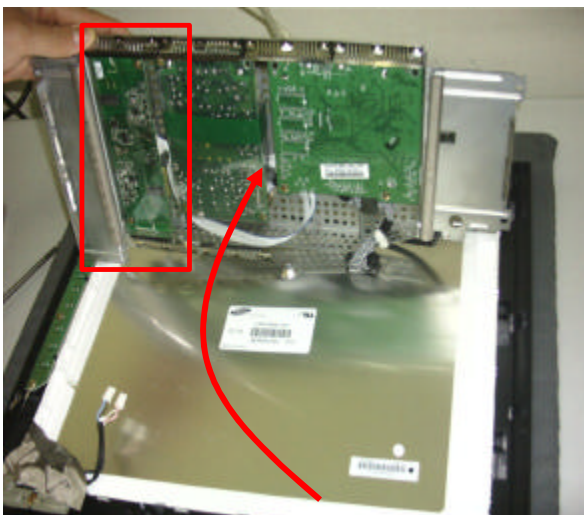
2. Remove back cover screw bolt (5 point)  
- 4 corner and center of bottom



3. Remove EMI tape and remove 6 screws.

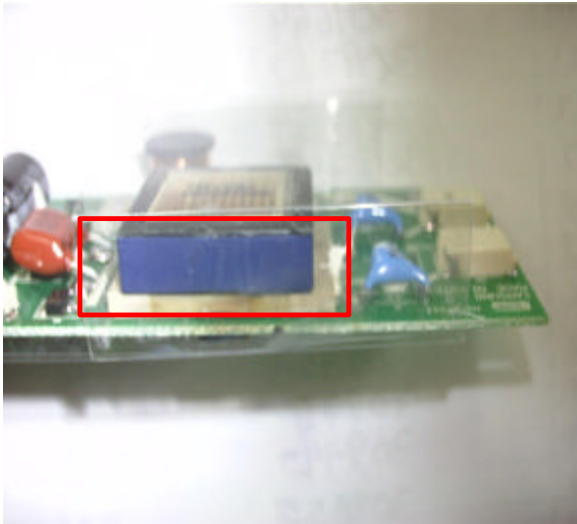


4. Removing screw : 4 coner screw + 2 screw  
at small bracket (right upper side)  
and disconnecter inverter cable.

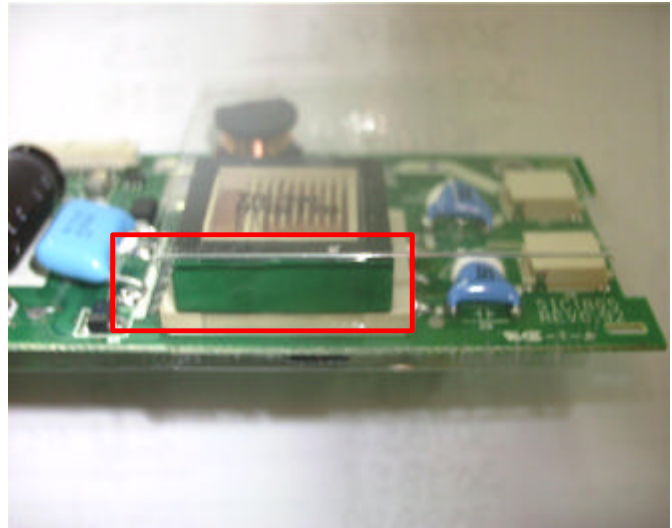


**Check inverter whether its part number is BN44-00064A or not (-41A,29A,60A)  
In case of 64A , then check the tape color  
which around trans.**

- Blue color => Replace with service inverter (BN44-00041A)
- Yellow or Green Color => Do not need to replace. (Improved version)



**BN44-00064A INVERTER (OLD VERSION)**  
Blue tape => Replace with new inverter



**BN44-00064A INVERTER (IMPROVED VERSION)**  
Yellow or green tape => Do not need to replace.



Replace inverter carefully.



**BN44-00041A**  
(4 Trans)

**BN44-00064A**  
(2 Trans)

**Inspection process**

- Connect signal generator or PC and check display quality.
- Before reassembl, check all connector to prevent poor connection.
- Check function key operation after replacement.
- Check gap of front cover and back cover all side.
- When taping work carefully cut the tape (sharp).
- Be carefull when removing,reconnecting connectors (fully insert until locking sound)
- When inputing monitor to Box, match serial number (set and Box.)